

**TO:** All Dealer Principals, Service Managers and Parts Managers

**Subject:** Vactor/Guzzler Manuals Update

**Number:** TT 063 **DATE:** 04/11/2012

### NOTICE



Follow recommended safety practices while performing all work. Refer to the Vactor/Guzzler Safety Manual for additional information.

This manual is available at: [www.vactor.com](http://www.vactor.com)

#### INTENT:

Unit manuals are available three different ways as shown in the chart. First half of 2012 all manuals are going to a USB drive in place of the CD/DVD's. The discs are being phased out and being replaced by the more versatile USB drives.

Manuals are also getting a new binder and covers. The new covers are model specific and include basic unit information for easy access.

The service parts pages and supporting files are on the new USB drive. The files can be put on network drives for easy access by all service technicians.

#### UNITS TO SERVICE:

NA

#### WARRANTY COVERAGE:

NA

#### SPECIAL TOOLS:

NA

#### PARTS REQUIRED:

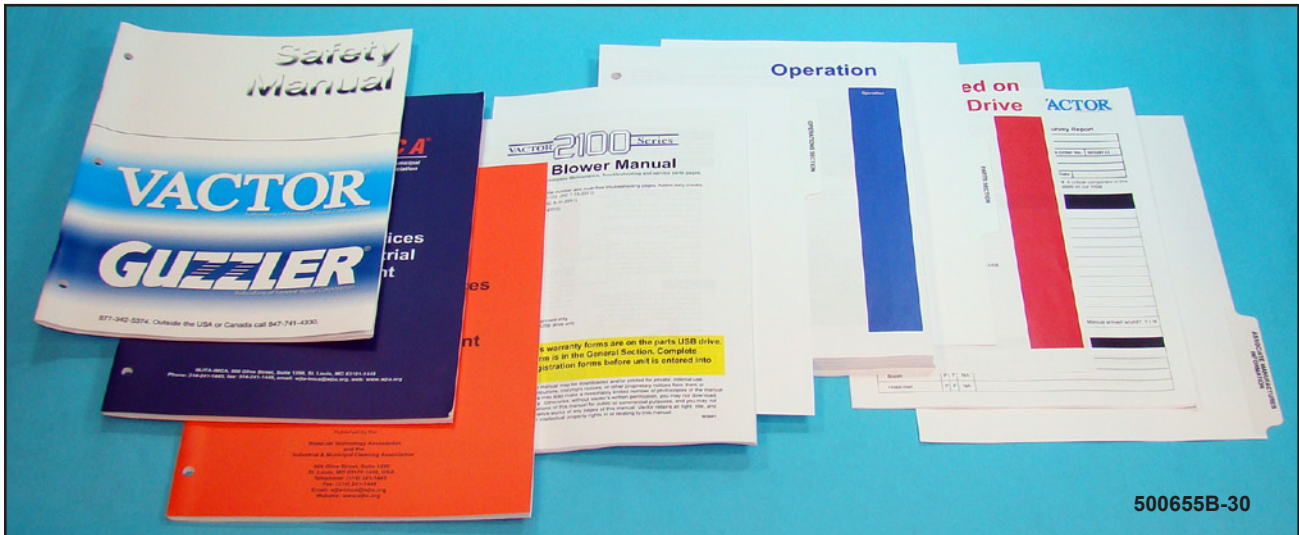
See table

PARTS AVAILABILITY: NA



**PROCEDURE CONTINUED:**

**500655B-30** - The standard new unit manual shown here, contains printed operations, options and initial part of maintenance. Complete manual, parts pages and all applicable files and video are included on the USB drive.



Manual Contents by Version			
Manual	500655-30	500655A-30	500655B-30
Full printed	X		
Digital only		X	
Standard unit manual			X
Contents			
Printed operations, options & basic maintenance	X		X
Full printed maintenance & trouble shooting	X		
Printed parts pages	X		
Vactor/Guzzler Safety manual (500646-30)	X	X	X
WJTA Waterblast Safety manual (500647-30)	as required	as required	as required
WJTA Vacuum Truck Safety manual (500657-30)	as required	as required	as required
Parts pages & all normal files on USB Stick	X	X	X
Spanish (For Reference)			
Vactor/Guzzler Safety manual (500646S-30)	as required	as required	as required
WJTA Waterblast Safety manual (500647S-30)	as required	as required	as required
WJTA Vacuum Truck Safety manual (500657S-30)	as required	as required	as required

PROCEDURE CONTINUED:

## Available manuals

Part No.	Manual	Notes
500655-30	Replacement Manual - full printed	Complete printed manual.
500655A-30	Replacement Manual on USB drive	Complete manual on USB drive.
<b>500655B-30</b>	<b>Standard Unit or Replacement Manual</b>	Standard production unit manual. Printed sections include the operation, options and basic maintenance.
<b>Note:</b> All orders require the unit serial number. See next page for content details. An extra USB drive is supplied for dealers with new units. Spanish is available for 2100 Series and Guzzler ACE/CL units.		
<b>The following are also available:</b>		
500646-30	Vactor/Guzzler Safety	Print (for a nominal charge) or free download, and on all USB drive's. Included with all training manuals.
500647-30	WJTA Waterblast Safety (Orange cover)	Print only. Included with all units that have high pressure water systems. 500647S-30 for Spanish.
500650-30	Guzzler off-loading options	Covers ACE, Classic and NX options
500657-30	WJTA Vacuum Truck Safety (Blue cover)	Print only. Included with vacuum units. 500657S-30 for Spanish.
503223-30	2100 Operator training book	Print only. Covers blower and fan operation, service and maintenance and most options, but no unit specific part pages. Includes safety manual. Printed in black and white. Excellent low cost manual to leave in the unit for reference.
503223A-30	2100 Plus Operator training book	Print only. Complete standard manual, but no unit specific part pages. Includes safety manual. Printed in black and white. Excellent low cost manual to leave in the unit for reference.
88385# -30	Chassis Manuals	88385# series, see system for all
49773-30	2100 Plus Diagnostics	Print only. Covers electrical control systems.
49773A-30	HXX w/Vansco Controls Diagnostics	Print only. Covers electrical control systems. Available Summer 2012.

**PROCEDURE CONTINUED:**

**FEDERAL SIGNAL Environmental Solutions VACTOR**  
Advancing security and well-being

**Pre-Delivery Inspection - Total Dealer Satisfaction Survey Report**

Dealer Name	HAMPTON ROADS #1 OF 2		
Customer Name	HAMPTON ROADS #1 OF 2		
Model	2112-16	Serial No.	09-06V-11793
Vector Invoice No.	011382		
Name			
Title			
Phone Number	End Customer Delivery Date		

At Vactor Manufacturing Inc., our goal is to provide TOTAL CUSTOMER SATISFACTION. A critical component in this process is the initial delivery of the product to you, our valued customer. Please rate us based on our initial performance on the criteria listed below.

Fit and Finish	P	F	NA	Comments
Paint				
Additional touch up required				
Clean				
Leaks				
Everything tight				
Fluid levels				
Chassis				
Transfer case				
Auxiliary engine				
Blower				
Adjustments				
Manuals/decals				Manual arrived w/unit? Y / N
Other				

Prep Time Required for Delivery	N/A	5	4	3	2	1
Overall Product Quality Compared to Other Manufacturers	N/A	5	4	3	2	1

Notes

Technician conducting PDI \_\_\_\_\_ Date \_\_\_\_\_

Service Manager \_\_\_\_\_ Date \_\_\_\_\_

Sales Person \_\_\_\_\_ Date \_\_\_\_\_

Would you like a follow-up call? Yes / No \_\_\_\_\_ Please attach any additional notes.

Once completed, please FAX to 815-673-1116 attention Quality Manager or email to [vactorquality@vactor.com](mailto:vactorquality@vactor.com). Retain original copy in unit file. QSF-VH-8.2.01 Vactor Delivery Forms.pdf - Rev. 11-17-2008

**Customer Support Pages include:**

- Dealer Pre-Delivery form
- OEM Chassis/Customer Information - includes chassis and unit serial numbers when available.
- ESG Chassis Contact List - service contact information
- Problem Resolution Flow Chart
- Vactor/Guzzler Delivery Guide
- Certificate of Performance - for rodder pump if equipped

**GUZZLER INFORMATION**

Unit #: 09-06V-11793

Yes  No

7800 EX4 SBA

address, phone / 24 hr

**CHASSIS BUILD - SPECIFICATION COMPONENTS**

Your new Chassis is equipped with the following options and interface systems (check all that apply). Follow the OEM Problem Resolution Flow Chart to expedite service for each of these functions.

Chassis Model Year	1981
Chassis Engine Model	ISM-385V
Chassis Engine Serial Number	32521633
Chassis Transmission Make	ALLISON
Chassis Transmission Model	4300 RDS
Chassis Transmission Serial Number	9910276252
Auxiliary Engine/PP Pump Make	7.7am-7pm est
Auxiliary Engine/PP Pump Model	1-800-343-7357
Auxiliary Engine/PP Pump Sr. Number	1-812-377-5000
Blower Model	1-800-238-9750
Blower Serial Number	1-866-836-6225
Transfer Case	
Transfer Case Serial Number	

**CONTACT LIST**

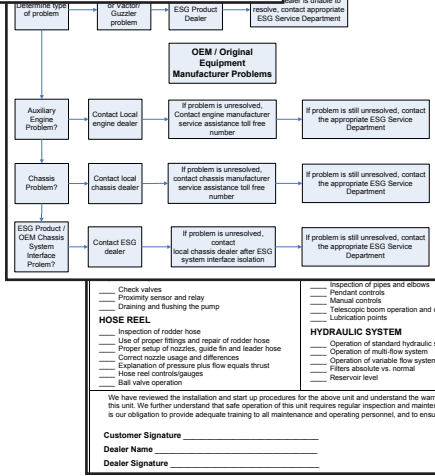
Time	Toll Free Contact Numbers
24/7	1-800-FTL-HELP 1-800-386-4357
24/7	1-800-STL-HELP 1-313-592-4200
24/7	1-800-STL-HELP 1-800-786-4357
7:3am-7pm est	1-800-544-8175
	1-800-DIESELS
	1-800-343-7357
	1-812-377-5000
	1-800-238-9750
	1-866-836-6225
M-F - 8:00am - 8:00pm	1-866-441-9638
In Warranty And Need Emergency Assistance	1-866-441-9659
24/7	1-800-medmud 1-800-633-4863
1-800-892-7052	
24/7	1-800-44CHASSIS 1-800-448-7825
1-630-753-5000	
1-800-544-8175	
1-800-533-6446	

Isuzu Care Team	M-F - 8:00am - 8:00pm	1-866-441-9638
In Warranty And Need Emergency Assistance		1-866-441-9659
<b>GMC</b>		
Customer Service Assistance	24/7	1-800-medmud 1-800-633-4863
Monroe Modifications Decal (Dual Steering)		1-800-892-7052
International (Navistar)		1-800-44CHASSIS 1-800-448-7825
Customer Assistance	24/7	1-800-44CHASSIS 1-800-448-7825
International Corporate Office		1-630-753-5000
International (Navistar) Cont.		1-800-544-8175
Fontaine Modification Decal (Dual Steering - Located On Left Door)		1-800-544-8175
<b>John Deere</b>		
Customer Service		1-800-533-6446

**First Point of Contact:**  
SG Dealer  
SG Factory  
SG Dealer  
SG Dealer  
SG Dealer  
SG Dealer  
hassis Dealer  
hassis Dealer  
SG Dealer

**First Point of Contact:**  
hassis Dealer  
hassis Dealer  
hassis Dealer

**Flow Chart - Group notation**



**Vactor/Guzzler Delivery Guide**

09-06V-11793 Date \_\_\_\_\_

Aux Engine HR \_\_\_\_\_

**What line if the item is not on a particular unit.**

**DEBRIS BODY**

- \_\_\_ Proper raise and lowering
- \_\_\_ Proper decanting of excess water
- \_\_\_ Operation of pump off system
- \_\_\_ Screens and float balls inspected/cleaned
- \_\_\_ Rear door seal inspected/cleaned
- \_\_\_ Load level indicator servicing

**OPTIONS**

- \_\_\_ Operation and maintenance of special options

**SAFETY PROCEDURES**

- \_\_\_ Proper installation of safety props
- \_\_\_ Awareness of all safety decals and instructions

**WARRANTY**

- \_\_\_ Location of S/N and explanation
- \_\_\_ Warranty policy read and explained
- \_\_\_ Replacement parts vs. warranty parts ordering
- \_\_\_ Auxiliary engine warranty and dealer
- \_\_\_ Chassis warranty and dealer

**PUBLICATIONS**

- \_\_\_ Operators manual
- \_\_\_ Parts manual
- \_\_\_ Aux engine manual
- \_\_\_ Video/DVD
- \_\_\_ Safety manual

**TRAINING**

- \_\_\_ Training schedule provided and class terms explained

# Vector/Guzzler Manual

This manual contains safety and operation only. The attached USB drive contains maintenance, troubleshooting and parts pages for your unit. A second USB drive may also be provided for the dealer to retain for future servicing. The USB drive is unique to the serial number noted on it.



Recommended Practices for the Use of Industrial Vacuum Equipment

Recommended Practices of Manually Operated High Pressure Waterjetting Equipment

Units with High Pressure Handgun Options

Published By: TA Technology Corporation  
 500 Old Mill Street, Suite 120  
 60101, North York, Ontario, Canada  
 Telephone: (416) 221-3447  
 Fax: (416) 221-3448  
 E-mail: sales@tatech.com  
 Website: www.tatech.com

FEDERAL BIENNIAL Environmental Solutions  
 Environmental Solutions  
 Environmental Solutions  
 Environmental Solutions

**Total Dealer Satisfaction Survey Report**

BY REPORT No. 09-03V-11678 Vector Invoice No. 011083

BY CUSTOMER Delivery Date

BY TOTAL CUSTOMER SATISFACTION. A minor improvement in the process in the retail industry of the product to you, our valued customer. Please fill in based on our field performance of the selected item below.

Fit and Finish	Y	N	Comments
Paint	Y	N	
Component Assembly	Y	N	
Labels	Y	N	
Labels	Y	N	
Component Light	Y	N	
Color Match	Y	N	
Options	Y	N	
Transfer Case	Y	N	
Auxiliary engine	Y	N	
Blower	Y	N	
Adjustments	Y	N	
Manufacturing	Y	N	
Others	Y	N	

Product Description

Blower	Y	N	
Blower	Y	N	
Blower	Y	N	
Blower	Y	N	

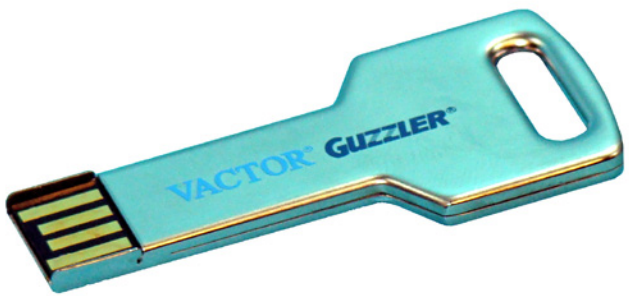
Manual attached as PDF 7/13

**503081 Blower Manual Revision**

(01) (02) (03) (04) (05) (06) (07) (08) (09) (10) (11) (12) (13) (14) (15) (16) (17) (18) (19) (20) (21) (22) (23) (24) (25) (26) (27) (28) (29) (30) (31) (32) (33) (34) (35) (36) (37) (38) (39) (40) (41) (42) (43) (44) (45) (46) (47) (48) (49) (50) (51) (52) (53) (54) (55) (56) (57) (58) (59) (60) (61) (62) (63) (64) (65) (66) (67) (68) (69) (70) (71) (72) (73) (74) (75) (76) (77) (78) (79) (80) (81) (82) (83) (84) (85) (86) (87) (88) (89) (90) (91) (92) (93) (94) (95) (96) (97) (98) (99) (100)

Vector supplied International, Sterling/Freightliner chassis warranty forms and Vector warranty form is located in the General Section. Fill out and send in before unit is put in service.

Continued on Red USB Drive



**Service Parts Pages**  
 Invoice Number: 11073  
 Serial Number: 09-03V-11678  
 Model: 2112-16 PD

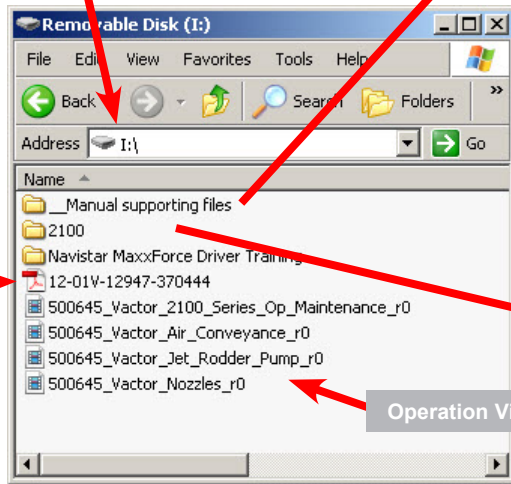
See USB drive (Printed pages optional)



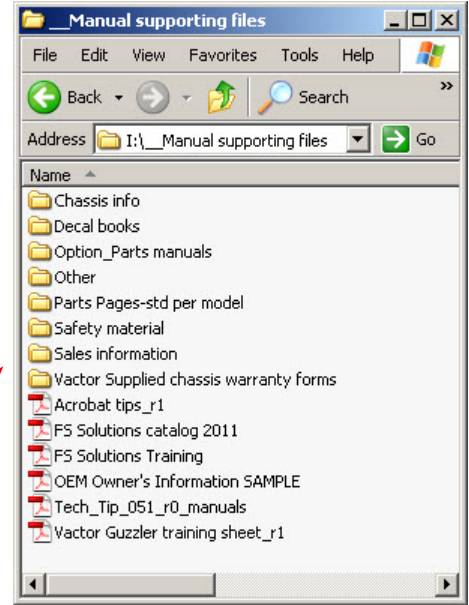
This Vector/Guzzler USB drive can be used on any computer. The drive contains Adobe Acrobat versions of the unit manuals, part pages, supporting information and video training.

*Manual supporting files* folder normally contains all the various decal books, option manuals, various parts manuals and sales information. For reference, the *Acrobat Tips* file is there to help guide you in working with Acrobat PDF files.

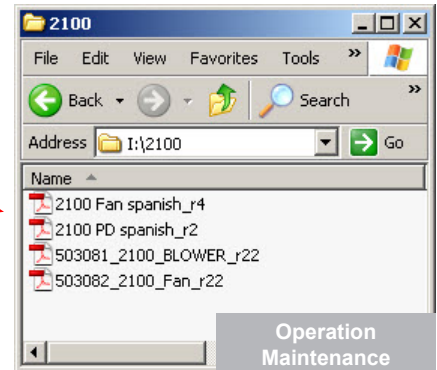
The USB drive can only be inserted one way. To avoid damaging your computer do not force the USB drive into the computer port.



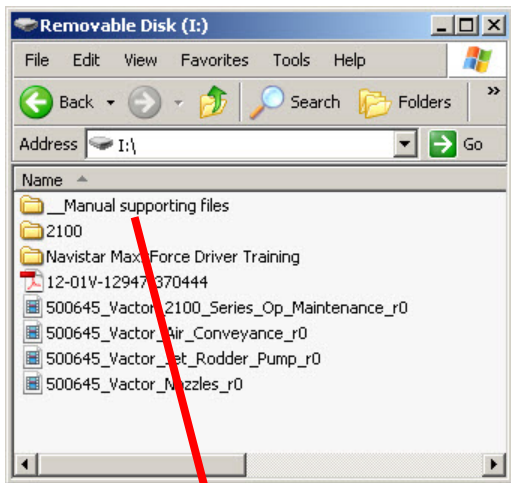
Part Pages



Operation Videos



Operation Maintenance Troubleshooting Manual(s)

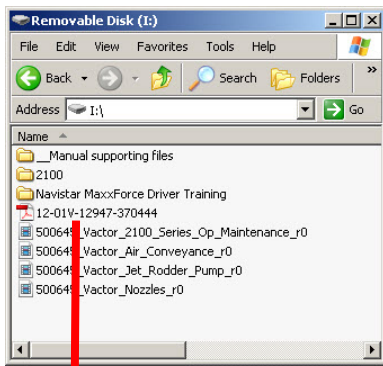


When you expand the *\_Manual supporting files* you will see the following sub-folders and supporting files.

Supporting files are updated routinely and subject to change.

Decal books	All decal books
	Decal_kit_book_guide
Option manuals	35gpm water pump
	47820D Vulcan scale system
	500650_Off_loading
	ACE_LR_r0_1230442 pump
	IBAK_camera_system_complete
	NX high dump complete
	Omnex t110-r170 manual
	OMNEX wireless remote belly pack manuals
	Vaporooter
	Waterheaters
Other	2011 Navistar MaxxForce Driver Training
	Eaton Hyd troubleshooting guide
	How to identify fluid ports and connectors
	Hyd fittings
	Hydraulic fitting identification_Spanish
	Hydraulic troubleshooting guide
	JD manuals
	Older sewer cleaner supplement book
	ParkerCylinderSafetyGuide
	Rodder Pump Rebuild
Parts manuals	OMSI Part books
	Voyager camera
	HYD oil filter
	FS camera system
	49209_AirSpade
	PD-500643 Nozzle test stand
	49807 CLEMCO blast machine
	Air_Manifold_Connectors
	VS-48847 ibak

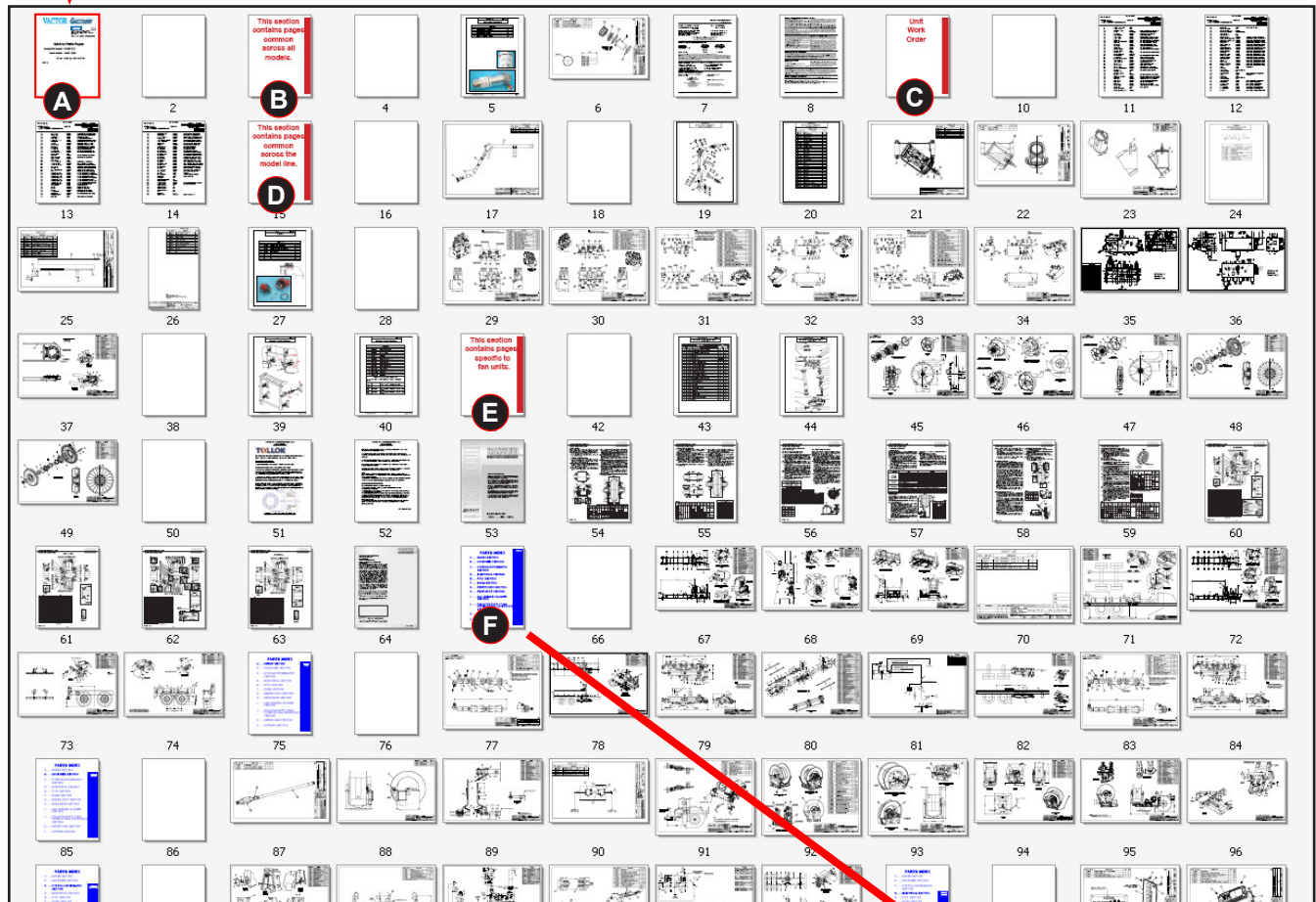
Parts Pages-std per model	Read me
	TI00001
	TI00002
	TI00003
	TI00004
Safety material	500646 safety manual
	503007 Service parts welding guide
	Back to Basics
	CLEMCO PPE_Enger_article
	GATES safehydpocketguide
	Spanish PD-500646
	Static ref article
	Static_Electricity-The_Hidden_Danger_in_Hazardous_Areas
Sales information	2009 Industrial Vacuum Parts_Accessories
	Armor_Belt_Beacon_Flyer
	Dupont color guide.PDF
	FSSolutionsBrochure
	Higbee Vacuum Tubes
	Milling Cutter
	Nozzles
	Vactor 03 Parts_Accessories
	Vactor 04 Retrofit Manual
	Vactor Brochures
	Vactor_Hose_Brochure_June_2005
Acrobat tips	
Freightliner warranty start form 2010	
FS Solutions catalog 2010	
FS Solutions Training	
OEM Owner's Information SAMPLE	
Tech_Tip_051_manuals	
Vactor Guzzler training sheet	



## USB Drive - Unit Parts Pages

The parts pages Adobe Acrobat PDF file is arranged in the same order as when printed. See the *Acrobat tips* file to learn how to efficiently browse the pages.

- A. Cover page with model and serial number of unit.
- B. Parts common to all models.
- C. Build ticket - included with units built after February 2011.
- D. Common parts across the model line.
- E. Parts specific to model variations as noted.
- F. Parts Index - start of unique parts pages for the unit organized as shown.



<b>PARTS INDEX</b>	
A. . . .	WATER SECTION
B. . . .	HOSE REEL SECTION
C. . . .	HYDRAULIC/PNEUMATIC SECTION
D. . . .	ELECTRICAL SECTION
E. . . .	P.T.O. SECTION
F. . . .	BOOM SECTION
G. . . .	DEBRIS BODY SECTION
H. . . .	REAR DOOR SECTION
I. . . .	AUX. ENGINE / BLOWER SECTION
J. . . .	FAN & FAN DUCT / FINAL FILTER & FINAL FILTER DUCT SECTION
K. . . .	WATER TANK SECTION
L. . . .	OPTIONS SECTION